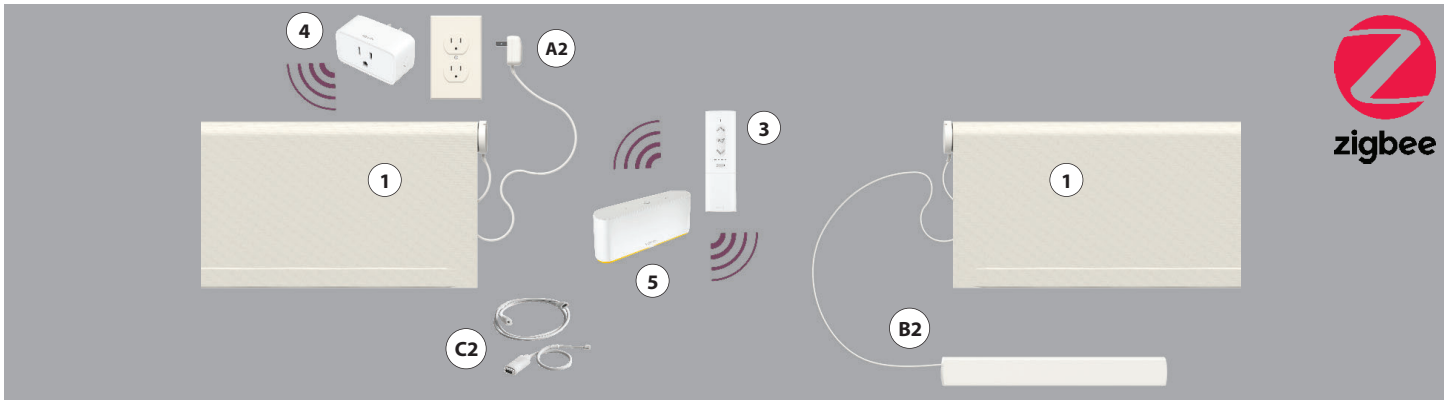
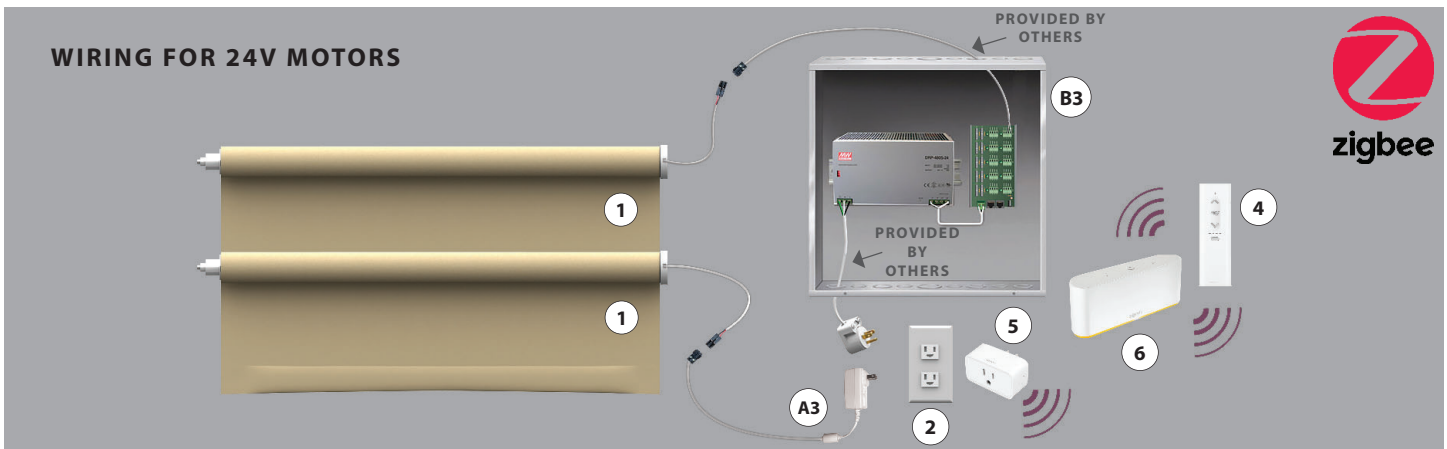


# Zigbee 3.0 Communication (Low Voltage) -MR150 Shading System

## Technical Data



#	ITEM	ADDITIONAL INFORMATION
1	SHADING SYSTEM	Option for System Model MR150. See motorized system data sheets for shading system information.
A2	PLUG-IN CHARGER FOR WIREFREE ZIGBEE MOTORS	Required for recharging internal battery motor and external battery pack. (CAC-LN)
B2	LITHIUM ION BATTERY PACK	Lithium ion Rechargeable battery pack, wiring and mounting brackets included. (Required for MBQ150ZGB motors)
C2	MAGNETIC CHARGING CABLE	Extends reach for more convenient charging; 1 adaptor per motor (MCAMBUQ); Magnetic Rigid Cable-33" (MCCMBUQ)
3	ZIGBEE CONTROLS	Required. Multiple options available. See 'ZIGBEE CONTROLS' for all options.
4	ZIGBEE SMART PLUG	Extends Zigbee radio range (works as routing device).
5	TAHOMA SWITCH	Zigbee Coordinator - Connectivity bridge controls up to 50 Zigbee devices and 40 RTS channels of motorized products.



#	ITEM	ADDITIONAL INFORMATION
1	SHADING SYSTEM	Option for MR150. See motorized system data sheets for shading system information.
2	AC POWER OUTLET	120V BY OTHERS (REQUIRED)
A3	24V DC SINGLE MOTOR POWER SUPPLY	60" attached lead.
B3	24V DC POWER DISTRIBUTION PANEL	Sold separately. 12" x 12" enclosure box contains 24V DC transformer, and distribution panel. 5, 10, 15 and 20 Power Panel available.
4	ZIGBEE CONTROLS	Required. Multiple options available. See 'ZIGBEE CONTROLS' for all options.
5	ZIGBEE SMART PLUG	Extends Zigbee radio range (works as routing device).
6	TAHOMA SWITCH	Zigbee Coordinator - Connectivity bridge controls up to 50 Zigbee devices and 40 RTS channels of motorized products.

For CAD wiring schematics for this system and others, please visit [WTShade.com](http://WTShade.com)

IPC.4002Rev1