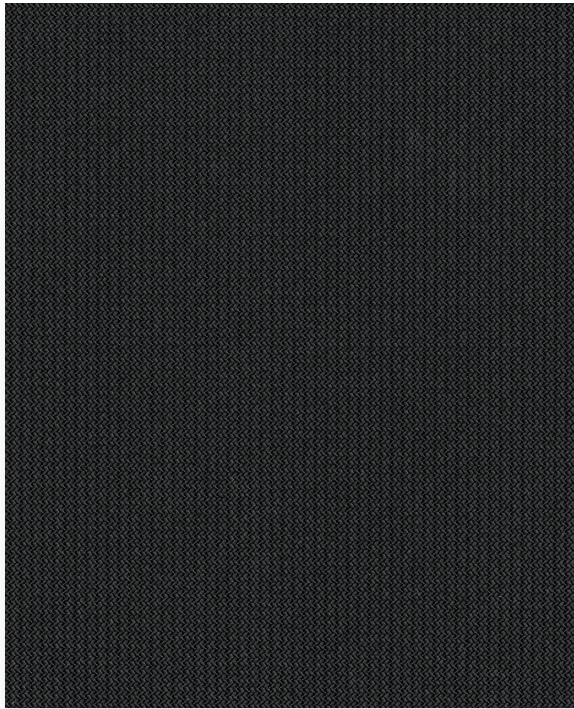


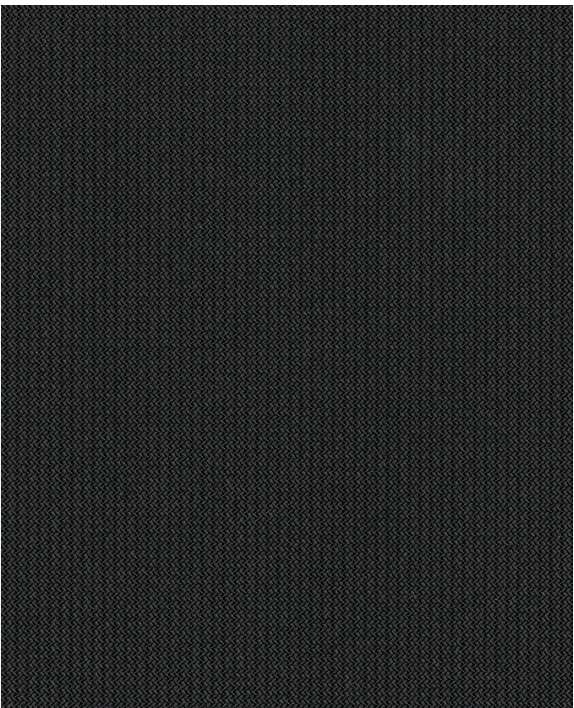
GreenScreen Revive®

Sustainable | 1% 5% openness



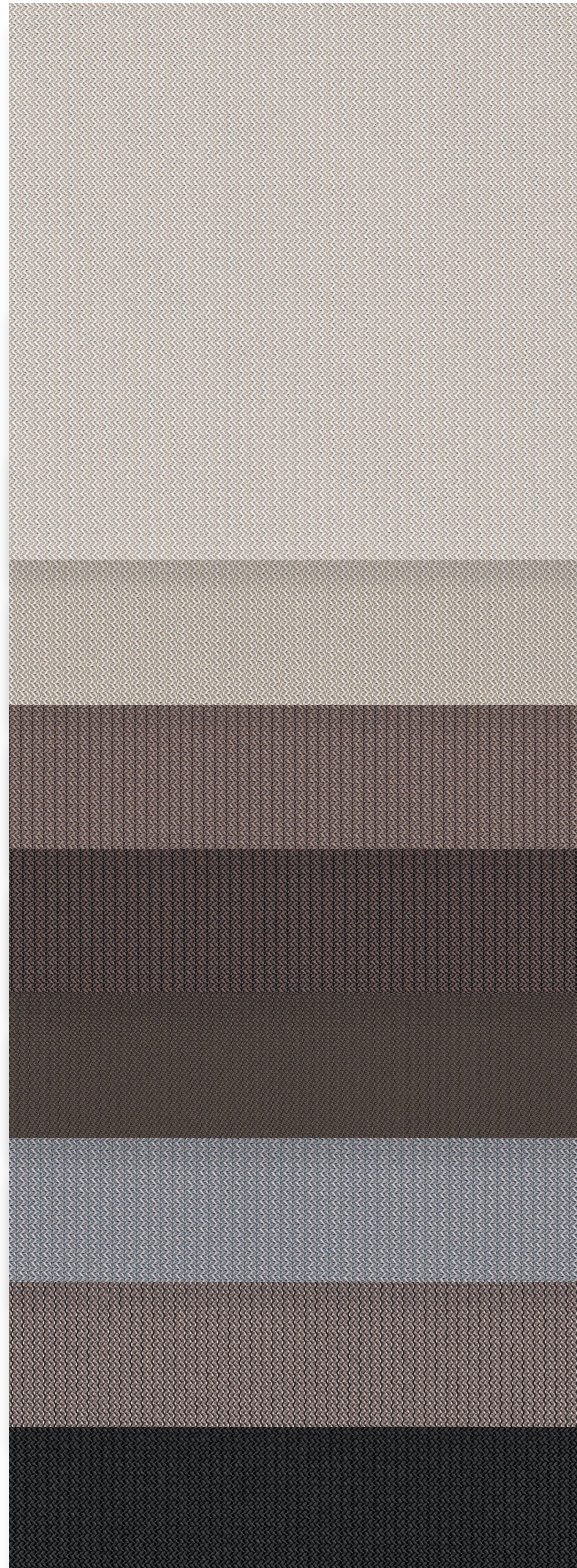
1%

A00030 | Onyx



5%

A00030 | Onyx



000010
Sand

000020
Linen

000055
Mushroom

000071
Suede

000015
Dusk

000022
Stone

000001
Pewter

A00030
Onyx

Fabrics sampled on waterfall are 5% openness.



Sun Control Textiles™

Specifications

Item Number
Product Category
Fabric Style
Openness Factor
Composition
UV Blockage
Standard Packaging
Width
Weight
Thickness

1% 002501 | 5% 002505
Sustainable
Warp Knit
1% & 5%
100% Polyester | 89% Recycled Content
Approximately 95%-99%
Rolls of 50 ly (46 lm)
118 in (300 cm)
1% 5.87 oz/yd² (199 g/m²) ±5% | 5% 5.01 oz/yd² (170 g/m²) ±5%
1% 0.0109 in (0.49 mm) ±5% | 5% 0.017 in (0.44 mm) ±5%

Classifications

Fire Classifications

NFPA 701 TM#1, California U.S. Title 19,
CAN/ULC-S109 Small & Large Flame Test
ASTM G21

Bacterial & Fungal Resistance
Environment
Acoustical Performance

RoHS - Lead Free, GREENGUARD Gold, Declare Label, Cradle to Cradle - Certified Bronze
1% NRC 0.20, SAA 0.22 | 5% NRC 0.15, SAA 0.14



ITEM COLOR

A00030 Onyx

000022 Stone

000001 Pewter

000015 Dusk

000071 Suede

000055 Mushroom

000020 Linen

000010 Sand

ITEM	COLOR	FABRIC								FABRIC + GLASS					
		thermal Total Solar				optical				commercial SHGC% Improvement		residential SHGC			
		Rs %	As %	Ts %		Rv %	Tv %								
		1 5	1 5	1 5		1 5	1 5	1 5		1 5	1 5	1 5	1 5		
A00030	Onyx	34	31	49	47	17	22	11	10	5	9	18	16	0.51	0.56
000022	Stone	52	49	24	24	24	27	44	43	17	20	34	32	0.42	0.45
000001	Pewter	43	37	38	37	19	26	25	23	8	14	24	21	0.46	0.52
000015	Dusk	36	31	50	47	14	22	11	10	2	8	18	16	0.50	0.56
000071	Suede	39	35	42	40	19	25	20	18	7	13	21	18	0.48	0.53
000055	Mushroom	46	42	34	31	20	27	32	31	10	18	29	24	0.45	0.49
000020	Linen	58	52	17	16	25	32	55	50	20	28	42	34	0.38	0.44
000010	Sand	61	54	13	11	26	35	60	54	23	33	45	37	0.36	0.43

Warranty

5 Year Interior

Disinfecting & Cleaning

Remove dust with a soft duster, cloth, sponge or low-suction vacuum. For minor stains clean with a mild dish detergent and lukewarm water using a soft brush, cloth or sponge. For tougher stains and disinfecting instructions visit [MermetUSA.com](https://www.MermetUSA.com).

Mermet Corporation
5970 N. Main Street | Cowpens, SC 29330
Ph 1.866.902.9647 | info@MermetUSA.com

[MermetUSA.com](https://www.MermetUSA.com)



Scan here for complete fabric resources.



Product Specifications Sheet

GreenScreen Revive® 1%

Specifications

Product Category: Sustainable	Composition: 100% polyester / 89% recycled content
Openness Factor: 1%	Standard Packaging: Rolls of 50 ly (46 lm)
UV Blockage: Approximately 99%	Width: 118" (300 cm)
Fabric Style: Warp Knit	Weight: 5.87 oz / yd2 (199 g / m2) ± 5%
Item #: 002501	Thickness: 0.019" (0.49 mm) ± 5%

Fenestration Data

Color#	Color Name	Fabric Properties					Fabric & Glass	
		Thermal			Optical		Commercial	Residential
		Total Solar			Rv (%)	Tv (%)	SHGC % Improvement	SHGC
Rs (%)	As (%)	Ts (%)						
A00030	Onyx	34	49	17	11	5	18	0.51
000022	Stone	52	24	24	44	17	34	0.42
000001	Pewter	43	38	19	25	8	24	0.46
000015	Dusk	36	50	14	11	2	18	0.50
000071	Suede	39	42	19	20	7	21	0.48
000055	Mushroom	46	34	20	32	10	29	0.45
000020	Linen	58	17	25	55	20	42	0.38
000010	Sand	61	13	26	60	23	45	0.36

Fabric properties may vary from the values reported due to standard variations in the manufacturing process. The fabric performance tests were conducted in accordance with ASTM E891 & ASTM E903-96: Total Solar Transmittance (Ts), Total Solar Reflectance (Rs), Solar Reflectance in Infrared (Rs IR), Total Solar Absorptance (As), Visible Reflectance (Rv), and Visible Transmission (Tv). Glass performance tests for Solar Heat Gain Coefficient (SHGC) were conducted using the Lawrence Berkeley National Laboratory Window 7.7 NFRC certified software. SHGC % improvement for commercial applications is based on a standard commercial glass makeup of Double Glazing 6 mm / 1/2" air / 6 mm with low E on surface #2. SHGC for residential applications is based on a default residential glass makeup of 3mm clear glass / 1/2" air / 3mm clear glass. Results for SHGC were obtained using the center of glass. Acoustical performance was tested in accordance with ASTM C423-17a: NRC is Noise Reduction Coefficient, SAA is Sound Absorption Average. For up-to-date test results, performance specifications and larger samples, contact Mermet at info@MermetUSA.com.

Fabrication Methods:

Cutting: Crush, cold, or ultrasonic
Welding: Mermet 103218 Tape is Recommended. 250-275°F. 5-10s.
 Radio frequency, impulse, hot air, or wedge

Fire Classifications:

NFPA 701-19 TM#1, California U.S. Title 19
 CAN/ULC-S109-14 Small & Large Flame Test

Environmental Benefits:

RoHS - Lead Free
 GREENGUARD Gold
 Cradle to Cradle - Bronze
 Declare Label

Fungal Resistance:

ASTM G21

Acoustical Performance:

NRC: 0.20, SAA: 0.22

We recommend testing all cutting and welding methods prior to use to confirm they meet your individual fabrication specifications.

Care & Handling

Regular light dusting with a feather duster is suggested. A hand-held vacuum with low suction may also be used. When vacuuming, avoid pulling or stretching the fabric. Rigorous vacuuming is not recommended since this could distort the fabric. Alternatively, dirt and debris can be blown away using compressed air or hand-held air dryer on the cool setting. Alternatively, a dry chemical sponge may also be used for spot cleaning. For tougher stains and disinfecting instructions visit www.MermetUSA.com.

5970 N. Main Street • Cowpens, SC 29330

Sales Department: Ph (866) 902-9647

info@MermetUSA.com





Product Specifications Sheet

GreenScreen Revive® 5%

Specifications

Product Category: Sustainable	Composition: 100% polyester / 89% recycled content
Openness Factor: 5%	Standard Packaging: Rolls of 50 ly (46 lm)
UV Blockage: Approximately 95%	Width: 118" (300 cm)
Fabric Style: Warp Knit	Weight: 5.01 oz / yd2 (170 g / m2) ± 5%
Item #: 002505	Thickness: 0.017" (0.44 mm) ± 5%

Fenestration Data

Color#	Color Name	Fabric Properties					Fabric & Glass	
		Thermal			Optical		Commercial	Residential
		Total Solar			Rv (%)	Tv (%)	SHGC % Improvement	SHGC
Rs (%)	As (%)	Ts (%)						
A00030	Onyx	31	47	22	10	9	16	0.56
000022	Stone	49	24	27	43	20	32	0.45
000001	Pewter	37	37	26	23	14	21	0.52
000015	Dusk	31	47	22	10	8	16	0.56
000071	Suede	35	40	25	18	13	18	0.53
000055	Mushroom	42	31	27	31	18	24	0.49
000020	Linen	52	16	32	50	28	34	0.44
000010	Sand	54	11	35	54	33	37	0.43

Fabric properties may vary from the values reported due to standard variations in the manufacturing process. The fabric performance tests were conducted in accordance with ASTM E891 & ASTM E903-96: Total Solar Transmittance (Ts), Total Solar Reflectance (Rs), Solar Reflectance in Infrared (Rs IR), Total Solar Absorptance (As), Visible Reflectance (Rv), and Visible Transmission (Tv). Glass performance tests for Solar Heat Gain Coefficient (SHGC) were conducted using the Lawrence Berkeley National Laboratory Window 7.7 NFRC certified software. SHGC % improvement for commercial applications is based on a standard commercial glass makeup of Double Glazing 6 mm / 1/2" air / 6 mm with low E on surface #2. SHGC for residential applications is based on a default residential glass makeup of 3mm clear glass / 1/2" air / 3mm clear glass. Results for SHGC were obtained using the center of glass. Acoustical performance was tested in accordance with ASTM C423-17a: NRC is Noise Reduction Coefficient, SAA is Sound Absorption Average. For up-to-date test results, performance specifications and larger samples, contact Mermet at info@MermetUSA.com.

Fabrication Methods:

Cutting: Crush, cold, or ultrasonic
Welding: Mermet 103218 Tape is Recommended. 250-275°F. 5-10s.
 Radio frequency, impulse, hot air, or wedge

Fire Classifications:

NFPA 701-19 TM#1, California U.S. Title 19
 CAN/ULC-S109-14 Small & Large Flame Test

Environmental Benefits:

RoHS - Lead Free
 GREENGUARD Gold
 Cradle to Cradle - Bronze
 Declare Label

Fungal Resistance:

ASTM G21

Acoustical Performance:

NRC: 0.15, SAA: 0.14

We recommend testing all cutting and welding methods prior to use to confirm they meet your individual fabrication specifications.

Care & Handling

Regular light dusting with a feather duster is suggested. A hand-held vacuum with low suction may also be used. When vacuuming, avoid pulling or stretching the fabric. Rigorous vacuuming is not recommended since this could distort the fabric. Alternatively, dirt and debris can be blown away using compressed air or hand-held air dryer on the cool setting. Alternatively, a dry chemical sponge may also be used for spot cleaning. For tougher stains and disinfecting instructions visit www.MermetUSA.com.

5970 N. Main Street • Cowpens, SC 29330

Sales Department: Ph (866) 902-9647

info@MermetUSA.com

