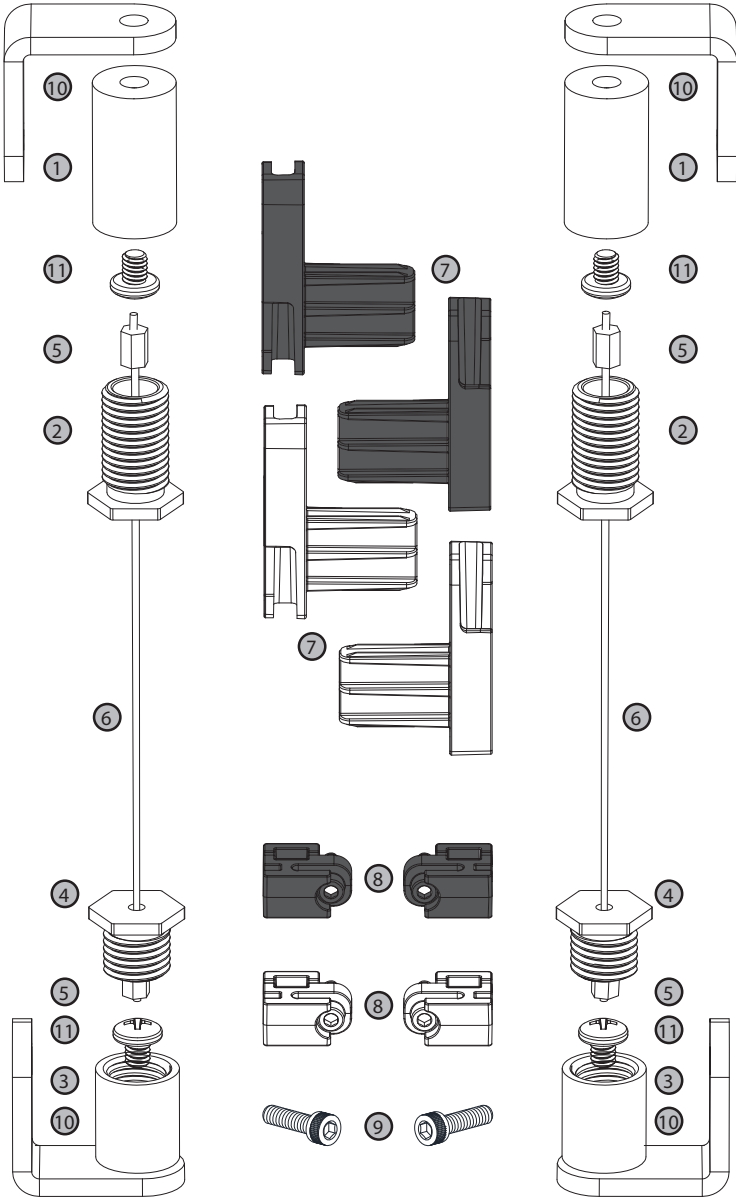


GUIDE WIRE CABLE KIT

Technical Data



PRODUCT INFORMATION

- Part Number: **CKGW**
- Compatible with External Hembar (HBX) ONLY
- Can be Ceiling/Sill, Wall or Jamb Mounted

KIT INCLUDES

| # | QTY | ADDITIONAL INFORMATION | PART NUMBER |
|----|-----|---|--------------------|
| 1 | 2 | 1" BARRELS | BGW10 |
| 2 | 2 | 1" STUDS | SGW10 |
| 3 | 2 | 1/2" BARRELS | BGW05 |
| 4 | 2 | 1/2" STUDS | SGW05 |
| 5 | 4 | CABLE STOPS | SSCOP-86 |
| 6 | 2 | 3/64" STAINLESS STEEL CABLE, 20ft | CLS12 |
| 7 | 2 | GUIDE CABLE END CAPS. INCLUDES ONE SET OF EACH COLOR: -10 (WHITE) AND -90 (BLACK) | HCGC-10 HCGC-90 |
| 8 | 2 | GUIDE CABLE CLIPS. INCLUDES ONE SET OF EACH COLOR: -10 (WHITE) AND -90 (BLACK) | CGC-10 CGC-90 |
| 9 | 4 | 6/32 SOCKET HEAD SCREW | SS-CS6/32X0.5 |
| 10 | 4 | BARREL BRACKET FOR WALL AND JAMB MOUNT | BCT |
| 11 | 4 | PAN HEAD SCREWS (FOR USE WITH ITEM 10 ONLY) | SP-8/32X0.25 |

IPC.3566/Rev1