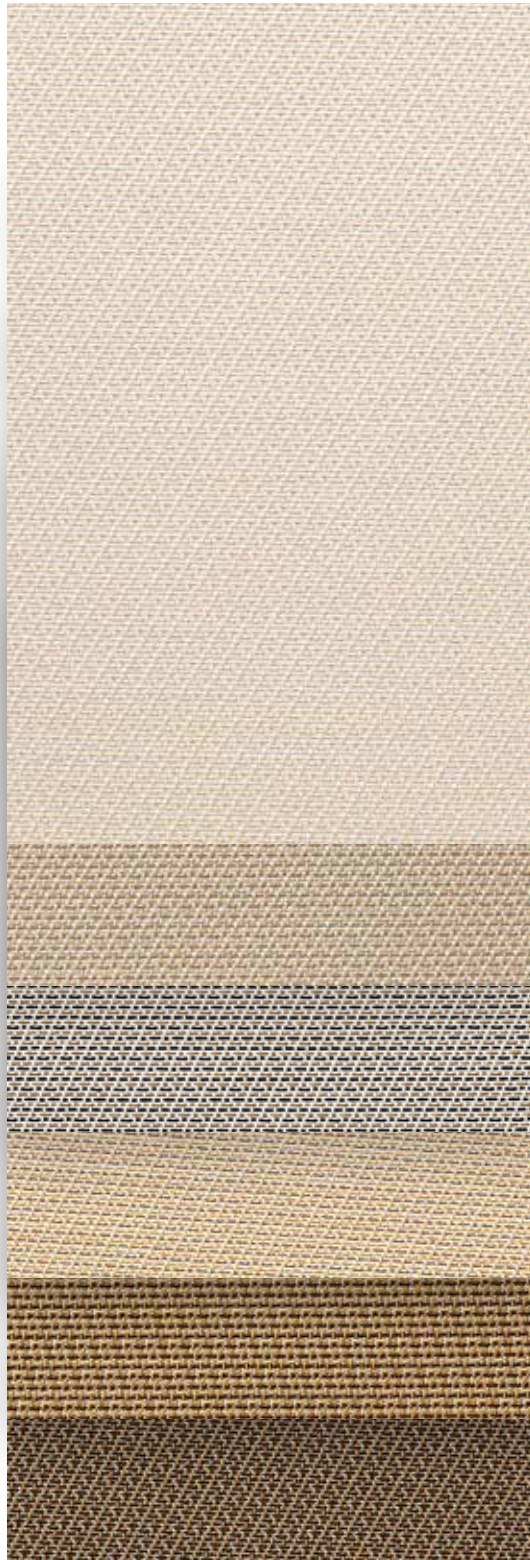


T Screen

Decorative | 3% openness



002020
White/Linen

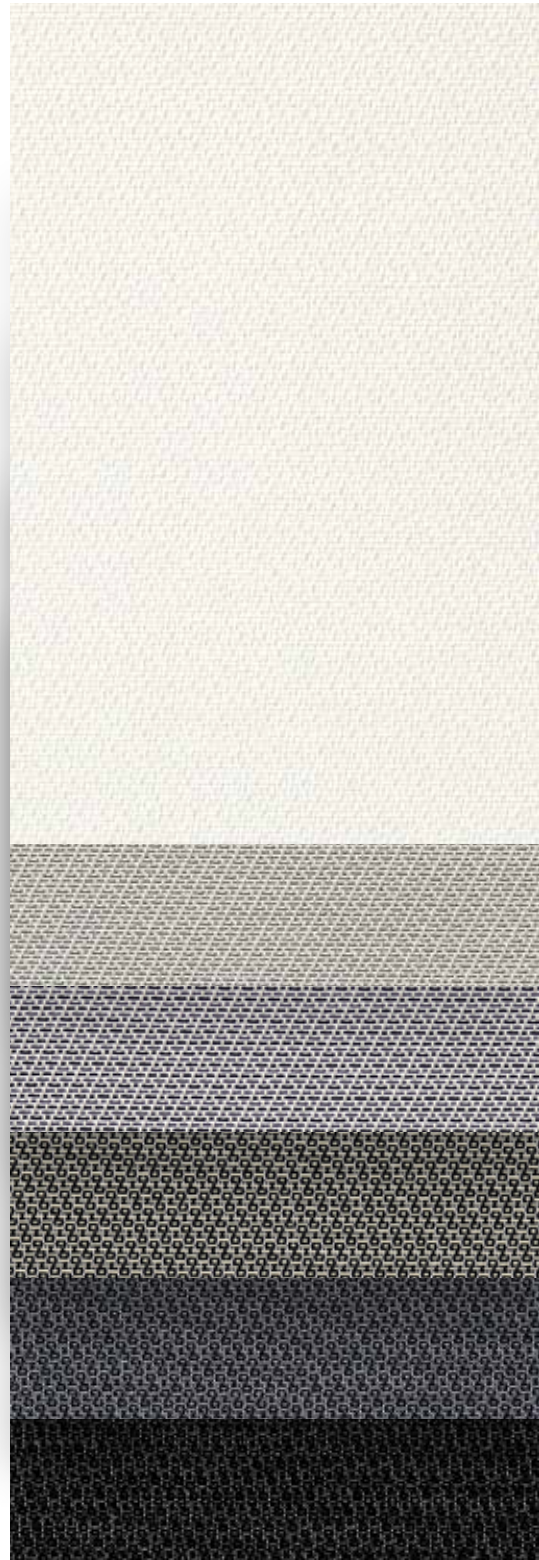
00M151
White/
Sable-Straw

00M164
White/
Sable-Cocoa

00M163
White/
Sable-Mustard

00M153
Sable/
Straw-Cocoa

010030
Sable/Charcoal



002002
White/White

002007
White/Pearl

00M116
White/
Charcoal-Grey

000M85
Charcoal/
Linen-Pearl

030001
Charcoal/Grey

030030
Charcoal/
Charcoal

Specifications

Item Number	009803
Product Category	Decorative
Fabric Style	Offset Twill
Openness Factor	3%
Composition	36% Fiberglass 64% Vinyl
UV Blockage	Approximately 97%
Standard Packaging	Rolls of 30 ly (27 lm)
Width	98 in (250 cm)
Weight	11.6 oz/yd ² (395 g/m ²) ±5%
Thickness	.025 in (0.64 mm) ±5%

Classifications

Fire Classifications	NFPA 701-10 TM#1, California U.S. Title 19, CAN/ULC-S109-03 Small Flame Test
Bacterial & Fungal Resistance	ASTM E2180, ASTM G21
Environment	RoHS - Lead Free, GREENGUARD Gold
Acoustic	NRC 0.15, SAA 0.15

Fabrication

Cutting: Cold, Ultrasonic or Crush | **Welding:** Radio Frequency, High Frequency, Impulse, Hot Air or Wedge
 We recommend testing all cutting and welding methods prior to use to confirm they meet your individual fabric specifications.

T Screen

ITEM	COLOR	SIDE*
002020	White Linen	Streetside Roomside
00M151	White Sable-Straw	Streetside Roomside
00M164	White Sable-Cocoa	Streetside Roomside
00M163	White Sable-Mustard	Streetside Roomside
00M153	Sable Straw-Cocoa	Streetside Roomside
010030	Sable Charcoal	Streetside Roomside
002002	White White	Streetside Roomside
002007	White Pearl	Streetside Roomside
00M116	White Charcoal-Grey	Streetside Roomside
000M85	Charcoal Linen-Pearl	Streetside Roomside
030001	Charcoal Grey	Streetside Roomside
030030	Charcoal Charcoal	Streetside Roomside

F A B R I C					F A B R I C + G L A S S				
thermal			optical		commercial		residential		
Total Solar			Rv (%)	Tv (%)	SHGC% Improvement		SHGC		
Rs (%)	As (%)	Ts (%)			Interior	Exterior	Interior	Exterior	
66	17	17	70	13	53	79	0.32	0.15	
61	22	17	64	14	47	79	0.35	0.15	
64	21	15	67	12	50	82	0.33	0.13	
56	28	16	57	13	42	79	0.38	0.15	
59	30	11	63	9	47	84	0.35	0.11	
44	44	12	45	9	34	82	0.44	0.13	
64	21	15	67	12	50	82	0.33	0.13	
56	28	16	57	13	42	79	0.38	0.15	
34	57	9	32	6	26	84	0.49	0.11	
31	59	10	30	7	26	84	0.51	0.12	
25	68	7	25	6	24	84	0.53	0.11	
15	77	8	16	6	18	82	0.58	0.12	
70	12	18	75	15	55	79	0.30	0.15	
70	12	18	75	15	55	79	0.30	0.15	
60	28	12	65	10	47	84	0.34	0.12	
49	38	13	52	11	39	79	0.41	0.14	
54	37	9	58	7	45	87	0.37	0.10	
36	54	10	38	8	32	82	0.48	0.12	
8	88	4	9	4	16	84	0.61	0.11	
18	77	5	20	4	21	84	0.56	0.10	
6	90	4	6	4	13	84	0.62	0.11	
11	84	5	10	4	16	84	0.60	0.11	
4	93	3	4	3	13	84	0.63	0.10	
4	93	3	4	3	13	84	0.63	0.10	

***Roomside:** identified by the dominant diagonal line moving up toward the right;
Streetside: identified by the dominant diagonal line moving down toward the right.

Warranty

5 Year Exterior & 10 Year Interior

Care & Cleaning

Remove dust with a vacuum cleaner or compressed air. Do not scrub. Do not use solvents or any abrasive substance which might damage the coating of the fabric. Clean with a sponge or soft brush dipped in soapy water using a mild detergent. Rinse with clean water. Leave the blind down until completely dry. You can also very gently rub the fabric with a clean white pencil eraser to remove small stains.

Mermet Corporation
 5970 N. Main Street ■ Cowpens, SC 29330
 Ph 1.866.902.9647 ■ info@mermetusa.com

The fabric performance tests were conducted in accordance with ASTM E891 & ASTM E903-96: Solar Transmittance (Ts), Solar Reflectance (Rs), Solar Absorptance (As), Visible Reflectance (Rv), and Visible Transmission (Tv). Glass performance tests for Solar Heat Gain Coefficient (SHGC) were conducted using the Lawrence Berkeley National Laboratory Window 7.3 NFRC certified software. SHGC % improvement for commercial applications is based on a standard commercial glass makeup of Double Glazing 6 mm | 1/2" air | 6 mm with low E on surface #2. SHGC for residential applications is based on a default residential glass makeup of 3mm clear glass | 1/2" air | 3mm clear glass. Results for SHGC were obtained using the center of glass. Acoustical performance was tested in accordance with ASTM C423-09a: NRC is Noise Reduction Coefficient, SAA is Sound Absorption Average. For up-to-date test results, performance specifications and larger samples, contact the Mermet Technical Department at www.mermetusa.com.

mermetusa.com



T Screen 3%

Specifications

Product Category: Decorative
Openness Factor: 3%
UV Blockage: Approximately 97%
Fabric Style: Offset Twill
Item #: 009803

Composition: 36% fiberglass / 64% vinyl
Standard Packaging: Rolls of 30 ly (27 lm)
Width: 98" (250 cm)
Weight: 11.6 oz / yd² (395 g / m²) ± 5%
Thickness: .025" (0.64 mm) ± 5%

Fenestration Data

Color#	Color Name	Side*	Fabric Properties					Fabric & Glass			
			Thermal			Optical		Commercial		Residential	
			Total Solar			Rv (%)	Tv (%)	SHGC % Improvement		SHGC	
Rs (%)	As (%)	Ts (%)	Interior	Exterior	Interior			Exterior			
002020	White/Linen	street	66	17	17	70	13	53	79	0.32	0.15
		room	61	22	17	64	14	47	79	0.35	0.15
00M151	White/Sable-Straw	street	64	21	15	67	12	50	82	0.33	0.13
		room	56	28	16	57	13	42	79	0.38	0.15
00M164	White/Sable-Cocoa	street	59	30	11	63	9	47	84	0.35	0.11
		room	44	44	12	45	9	34	82	0.44	0.13
00M163	White/Sable-Mustard	street	64	21	15	67	12	50	82	0.33	0.13
		room	56	28	16	57	13	42	79	0.38	0.15
00M153	Sable/Straw-Cocoa	street	34	57	9	32	6	26	84	0.49	0.11
		room	31	59	10	30	7	26	84	0.51	0.12
010030	Sable/Charcoal	street	25	68	7	25	6	24	84	0.53	0.11
		room	15	77	8	16	6	18	82	0.58	0.12
002002	White/White	street	70	12	18	75	15	55	79	0.30	0.15
		room	70	12	18	75	15	55	79	0.30	0.15
002007	White/Pearl	street	60	28	12	65	10	47	84	0.34	0.12
		room	49	38	13	52	11	39	79	0.41	0.14
00M116	White/Charcoal-Grey	street	54	37	9	58	7	45	87	0.37	0.10
		room	36	54	10	38	8	32	82	0.48	0.12
000M85	Charcoal/Linen-Pearl	street	8	88	4	9	4	16	84	0.61	0.11
		room	18	77	5	20	4	21	84	0.56	0.10
030001	Charcoal/Grey	street	6	90	4	6	4	13	84	0.62	0.11
		room	11	84	5	10	4	16	84	0.60	0.11
030030	Charcoal/Charcoal	street	4	93	3	4	3	13	84	0.63	0.10
		room	4	93	3	4	3	13	84	0.63	0.10

*Room side: identified by the dominant diagonal line moving up toward the right; Street side: identified by the dominant diagonal line moving down toward the right.

The fabric performance tests were conducted in accordance with ASTM E891 & ASTM E903-96: Solar Transmittance (Ts), Solar Reflectance (Rs), Solar Absorptance (As), Visible Reflectance (Rv), and Visible Transmission (Tv). Glass performance tests for Solar Heat Gain Coefficient (SHGC) were conducted using the Lawrence Berkeley National Laboratory Window 7.3 NFRC certified software. SHGC % improvement for commercial applications is based on a standard commercial glass makeup of Double Glazing 6 mm / 1/2" air / 6 mm with low E on surface #2. SHGC for residential applications is based on a default residential glass makeup of 3mm clear glass / 1/2" air / 3mm clear glass. Results for SHGC were obtained using the center of glass. Acoustical performance was tested in accordance with ASTM C423-09a: NRC is Noise Reduction Coefficient, SAA is Sound Absorption Average. For up-to-date test results, performance specifications and larger samples, contact the Mermet Technical Department at: www.mermetusa.com.

Fabrication Methods:

Cutting: cold, ultrasonic or crush
 Welding: radio frequency, high frequency, impulse, hot air, wedge

Fire Classifications:

NFPA 701-10 TM#1, California U.S. Title 19
 CAN/ULC-S109-03 Small Flame Test
Bacterial and Fungal Resistance:
 ASTM E2180, ASTM G21

Environmental Benefits:

RoHS - Lead Free

Acoustical Performance:

NRC: 0.15, SAA: 0.15

We recommend testing all cutting and welding methods prior to use to confirm they meet your individual fabrication specifications.

Care & Handling

Remove dust with vacuum cleaner or compressed air. Do not scrub. Do not use solvents or any abrasive substance which might damage the coating of the fabric. Clean with a sponge or a soft brush dipped in soapy water using mild detergent. Rinse with clean water. Leave the blind down until completely dry. You can also very gently rub the fabric with a clean white pencil eraser to remove small stains.

5970 N. Main Street • Cowpens, SC 29330

Sales Department: Ph (866) 902-9647

info@mermetusa.com