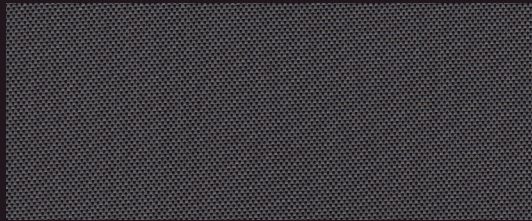
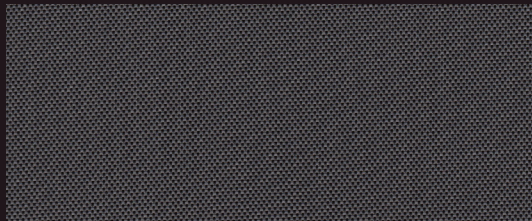


E Screen™ & E Screen™ WITH KOOLBLACK™ TECHNOLOGY

High Performance | 0.5% 1% 3% 5% openness



0.5% A30A01 | Charcoal/Grey



1% 030001 | Charcoal/Grey



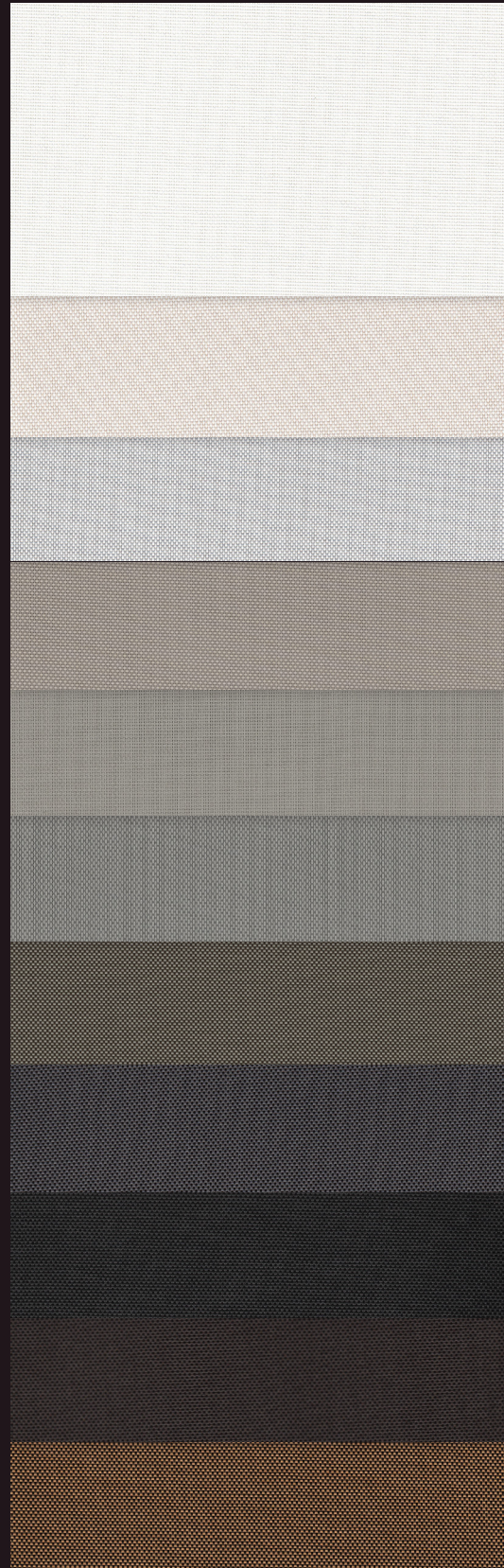
3% 030001 | Charcoal/Grey



5% 030001 | Charcoal/Grey



10% 030001 | Charcoal/Grey



002002
White/White

002020
White/Linen

002007
White/Pearl

007020
Pearl/Linen

007007
Pearl/Pearl

007001
Pearl/Grey

00M122
Charcoal/
Grey-Stone*

030001
Charcoal/
Grey*

030030
Charcoal/
Charcoal*

030061
Charcoal/
Cocoa*

030071
Charcoal/
Apricot*

*Available in KOOLBLACK® Technology.
Fabrics sampled on the waterfall are 3% openness.

Fabric Specifications

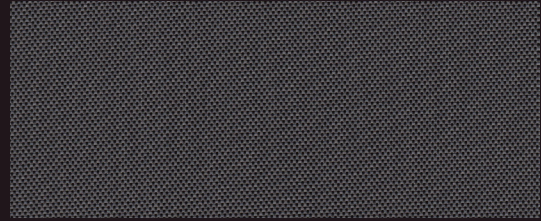
Fabric Style	UV Blockage	Composition	Standard Roll Length	Warranty
Basketweave	Approximately 90%-99.5%	36% Fiberglass, 64% Vinyl	34 ly (31 lm)	5 Year Exterior 10 Year Interior

E Screen™

Available Colors

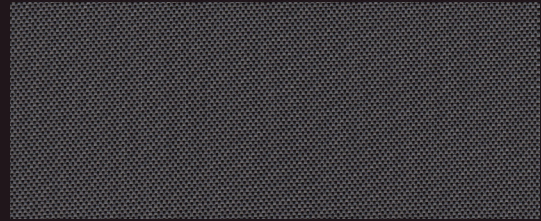
White/White	White/Linen	White/Pearl
Pearl/Linen	Pearl/Pearl	Pearl/Grey
Charcoal/Grey-Stone	Charcoal/Grey	Charcoal/Charcoal
Charcoal/Cocoa	Charcoal/Apricot	

Openness	Item No.	Available Widths			Weight oz/yd ² (±5%)	Thickness inches (±5%)
		78"	98"	122"		
0.5%	007500			•	13.5	0.023
1%	007501	•	•	•	13.3	0.020
3%	007503	•	•	•	11.6	0.017
5%	007505	•	•	•	10.7	0.016
10%	007510	•	•	•	10.3	0.020



0.5%

A30A01 | Charcoal/Grey



1%

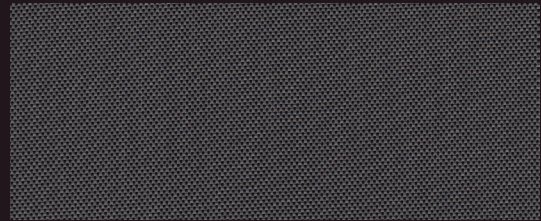
030001 | Charcoal/Grey

E Screen™ with KOOLBLACK TECHNOLOGY

Available Colors

Charcoal/Grey-Stone	Charcoal/Grey	Charcoal/Charcoal
Charcoal/Cocoa	Charcoal/Apricot	

Openness	Item No.	Available Widths			Weight oz/yd ² (±5%)	Thickness inches (±5%)
		78"	98"	122"		
0.5%	007700			•	14.6	0.025
1%	007701		•	•	12.9	0.021
3%	007703		•	•	11.3	0.020
5%	007705		•	•	10.6	0.019
10%	007710		•	•	10.6	0.021



3%

030001 | Charcoal/Grey



5%

030001 | Charcoal/Grey



10%

030001 | Charcoal/Grey



Looking for fenestration data?
Scan here for complete fabric resources.

MermetUSA.com



Mermet Corporation

5970 N. Main Street
1.866.902.9647

Cowpens, SC 29330
info@MermetUSA.com

Product performance and specification data is subject to change, visit www.Mermetusa.com for the most current information

E Screen™ 0.5%

Specifications

Product Category: Conventional
Openness Factor: 0.5%
UV Blockage: Approximately 99.5%
Fabric Style: Basketweave
Item #: 007500

Composition: 36% fiberglass / 64% vinyl
Standard Packaging: Rolls of 34 ly (31 lm)
Width: 122" (310 cm)
Weight: 13.54 oz / yd2 (459 g / m2) ± 5%
Thickness: 0.023" (0.58 mm) ± 5%

Fenestration Data

Color#	Color Name	Fabric Properties						Fabric & Glass			
		Rs IR (%)	Thermal			Optical		Commercial		Residential	
			Total Solar			Rv (%)	Tv (%)	SHGC % Improvement		SHGC	
Rs (%)	As (%)	Ts (%)	Interior	Exterior	Interior			Exterior			
A30A01	Charcoal/Grey	7	7	93	0	7	0	18	82	0.57	0.11
A02A02	White/White	75	78	9	13	83	10	66	84	0.22	0.11
A02A20	White/Linen	69	71	16	13	76	9	58	84	0.26	0.12
A02A07	White/Pearl	61	64	28	8	69	6	55	87	0.29	0.09
A07A20	Pearl/Linen	38	39	55	6	41	3	37	84	0.43	0.10
A07A07	Pearl/Pearl	35	36	60	4	38	2	34	87	0.44	0.09
A07A01	Pearl/Grey	33	33	63	4	33	2	32	87	0.46	0.10
A0M122	Charcoal/Grey-Stone	8	8	92	0	8	0	18	84	0.56	0.11
A30A30	Charcoal/Charcoal	4	4	96	0	4	0	16	82	0.58	0.11
A30A61	Charcoal/Cocoa	12	9	91	0	6	0	18	84	0.56	0.11
A30A71	Charcoal/Apricot	10	10	90	0	10	0	21	84	0.55	0.11

Fabric properties may vary from the values reported due to standard variations in the manufacturing process. The fabric performance tests were conducted in accordance with ASTM E891 & ASTM E903: Total Solar Transmittance (Ts), Total Solar Reflectance (Rs), Solar Reflectance in Infrared (Rs IR), Total Solar Absorbance (As), Visible Reflectance (Rv), and Visible Transmission (Tv). Glass performance tests for Solar Heat Gain Coefficient (SHGC) were conducted using the Lawrence Berkeley National Laboratory Window 7.8 NFRC certified software. SHGC % improvement for commercial applications is based on a standard commercial glass makeup of Double Glazing 6 mm / 1/2" air / 6 mm with low E on surface #2. SHGC for residential applications is based on a default residential glass makeup of 3mm clear glass / 1/2" air / 3mm clear glass. Results for SHGC were obtained using the center of glass. Acoustical performance was tested in accordance with ASTM C423: NRC is Noise Reduction Coefficient, SAA is Sound Absorption Average. For up-to-date test results, performance specifications and larger samples, contact Mermet at info@MermetUSA.com.

Fabrication Methods:

Cutting: Crush, cold, or ultrasonic

Welding: Fabric welds without tape. 225-275°F. 5-10s.
 Radio frequency, impulse, hot air, or wedge

Fire Classifications:

NFPA 701 TM#1, California U.S. Title 19
 CAN/ULC-S109 Small & Large Flame Test

Bacterial and Fungal Resistance:

ASTM E2180, ASTM G21

Environmental Benefits:

RoHS - Lead Free
 GREENGUARD Gold

Acoustical Performance:

NRC: 0.10, SAA: 0.08

We recommend testing all cutting and welding methods prior to use to confirm they meet your individual fabrication specifications.

Care & Handling

Remove dust with a soft duster, cloth, sponge, vacuum cleaner, or compressed air. Do not scrub. Do not use solvents or any abrasive substance which might damage the coating of the fabric. For minor stains clean with a soft cloth, sponge, or soft brush dipped in lukewarm soapy water using mild detergent. Rinse with clean water. Leave the blind down until completely dry. For tougher stains and disinfecting instructions visit www.MermetUSA.com.

5970 N. Main Street • Cowpens, SC 29330

Sales Department: Ph (866) 902-9647

info@MermetUSA.com





Sun Control Textiles™

Product Specifications Sheet

E Screen™ 1%

Specifications

Product Category: Conventional
Openness Factor: 1%
UV Blockage: Approximately 99%
Fabric Style: Basketweave
Item #: 007501

Composition: 36% fiberglass / 64% vinyl
Standard Packaging: Rolls of 34 ly (31 lm)
Width: 78" (200 cm), 98" (250 cm), 122" (310 cm)
Weight: 13.3 oz / yd2 (452 g / m2) ± 5%
Thickness: 0.020" (0.52 mm) ± 5%

Fenestration Data

Color#	Color Name	Fabric Properties						Fabric & Glass			
		Rs IR (%)	Thermal			Optical		Commercial		Residential	
			Total Solar			Rv (%)	Tv (%)	SHGC % Improvement		SHGC	
Rs (%)	As (%)	Ts (%)	Interior	Exterior	Interior			Exterior			
030001	Charcoal/Grey	9	9	88	3	8	2	16	84	0.58	0.11
002002	White/White	73	75	11	14	80	11	61	82	0.25	0.12
002020	White/Linen	65	66	20	14	69	10	53	82	0.31	0.13
002007	White/Pearl	55	58	33	9	62	6	47	87	0.34	0.10
007020	Pearl/Linen	37	39	54	7	41	5	37	84	0.42	0.11
007007	Pearl/Pearl	31	33	62	5	35	3	34	84	0.45	0.10
007001	Pearl/Grey	30	29	66	5	30	3	29	84	0.47	0.11
00M122	Charcoal/Grey-Stone	11	11	87	2	11	2	18	82	0.54	0.11
030030	Charcoal/Charcoal	3	4	95	1	4	1	13	84	0.60	0.10
030061	Charcoal/Cocoa	5	5	93	2	5	2	16	84	0.59	0.11
030071	Charcoal/Apricot	13	13	86	1	14	1	18	84	0.56	0.09

Fabric properties may vary from the values reported due to standard variations in the manufacturing process. The fabric performance tests were conducted in accordance with ASTM E891 & ASTM E903-96: Total Solar Transmittance (Ts), Total Solar Reflectance (Rs), Solar Reflectance in Infrared (Rs IR), Total Solar Absorptance (As), Visible Reflectance (Rv), and Visible Transmission (Tv). Glass performance tests for Solar Heat Gain Coefficient (SHGC) were conducted using the Lawrence Berkeley National Laboratory Window 7.7 NFRC certified software. SHGC % improvement for commercial applications is based on a standard commercial glass makeup of Double Glazing 6 mm / 1/2" air / 6 mm with low E on surface #2. SHGC for residential applications is based on a default residential glass makeup of 3mm clear glass / 1/2" air / 3mm clear glass. Results for SHGC were obtained using the center of glass. Acoustical performance was tested in accordance with ASTM C423-17a: NRC is Noise Reduction Coefficient, SAA is Sound Absorption Average. For up-to-date test results, performance specifications and larger samples, contact Mermet at info@MermetUSA.com.

Fabrication Methods:

Cutting: Crush, cold, or ultrasonic
Welding: Fabric welds without tape. 225-275°F. 5-10s.
 Radio frequency, impulse, hot air, or wedge

Fire Classifications:

NFPA 701-19 TM#1, California U.S. Title 19
 CAN/ULC-S109-14 Small & Large Flame Test

Bacterial and Fungal Resistance:

ASTM E2180, ASTM G21

Environmental Benefits:

RoHS - Lead Free
 GREENGUARD Gold

Acoustical Performance:

NRC: 0.50, SAA: 0.50

We recommend testing all cutting and welding methods prior to use to confirm they meet your individual fabrication specifications.

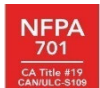
Care & Handling

Remove dust with a soft duster, cloth, sponge, vacuum cleaner, or compressed air. Do not scrub. Do not use solvents or any abrasive substance which might damage the coating of the fabric. For minor stains clean with a soft cloth, sponge, or soft brush dipped in lukewarm soapy water using mild detergent. Rinse with clean water. Leave the blind down until completely dry. For tougher stains and disinfecting instructions visit www.MermetUSA.com.

5970 N. Main Street • Cowpens, SC 29330

Sales Department: Ph (866) 902-9647

info@MermetUSA.com





Sun Control Textiles™

Product Specifications Sheet

E Screen™ 3%

Specifications

Product Category: Conventional
Openness Factor: 3%
UV Blockage: Approximately 97%
Fabric Style: Basketweave
Item #: 007503

Composition: 36% fiberglass / 64% vinyl
Standard Packaging: Rolls of 34 ly (31 lm)
Width: 78" (200 cm), 98" (250 cm), 122" (310 cm)
Weight: 11.6 oz / yd2 (393 g / m2) ± 5%
Thickness: 0.017" (0.43 mm) ± 5%

Fenestration Data

Color#	Color Name	Fabric Properties						Fabric & Glass			
		Rs IR (%)	Thermal			Optical		Commercial		Residential	
			Total Solar			Rv (%)	Tv (%)	SHGC % Improvement		SHGC	
Rs (%)	As (%)	Ts (%)	Interior	Exterior	Interior			Exterior			
030001	Charcoal/Grey	11	10	85	5	10	5	16	84	0.60	0.11
002002	White/White	70	73	11	16	78	13	58	82	0.28	0.14
002020	White/Linen	63	63	21	16	66	12	47	82	0.34	0.14
002007	White/Pearl	49	52	38	10	56	8	42	84	0.38	0.11
007020	Pearl/Linen	38	39	48	13	42	11	34	79	0.44	0.15
007007	Pearl/Pearl	31	32	59	9	34	8	32	82	0.47	0.13
007001	Pearl/Grey	28	27	63	10	27	8	26	79	0.50	0.14
00M122	Charcoal/Grey-Stone	13	13	80	7	13	6	18	79	0.55	0.14
030030	Charcoal/Charcoal	5	5	91	4	5	4	13	84	0.62	0.11
030061	Charcoal/Cocoa	7	7	89	4	7	3	13	84	0.62	0.10
030071	Charcoal/Apricot	18	18	75	7	18	7	18	82	0.57	0.12

Fabric properties may vary from the values reported due to standard variations in the manufacturing process. The fabric performance tests were conducted in accordance with ASTM E891 & ASTM E903-96: Total Solar Transmittance (Ts), Total Solar Reflectance (Rs), Solar Reflectance in Infrared (Rs IR), Total Solar Absorptance (As), Visible Reflectance (Rv), and Visible Transmission (Tv). Glass performance tests for Solar Heat Gain Coefficient (SHGC) were conducted using the Lawrence Berkeley National Laboratory Window 7.7 NFRC certified software. SHGC % improvement for commercial applications is based on a standard commercial glass makeup of Double Glazing 6 mm / 1/2" air / 6 mm with low E on surface #2. SHGC for residential applications is based on a default residential glass makeup of 3mm clear glass / 1/2" air / 3mm clear glass. Results for SHGC were obtained using the center of glass. Acoustical performance was tested in accordance with ASTM C423-17a: NRC is Noise Reduction Coefficient, SAA is Sound Absorption Average. For up-to-date test results, performance specifications and larger samples, contact Mermet at info@MermetUSA.com.

Fabrication Methods:

Cutting: Crush, cold, or ultrasonic

Welding: Fabric welds without tape. 225-275°F. 5-10s.
Radio frequency, impulse, hot air, or wedge

Fire Classifications:

NFPA 701-19 TM#1, California U.S. Title 19
CAN/ULC-S109-14 Small & Large Flame Test

Bacterial and Fungal Resistance:

ASTM E2180, ASTM G21

Environmental Benefits:

RoHS - Lead Free

GREENGUARD Gold

Acoustical Performance:

NRC: 0.15, SAA: 0.16

We recommend testing all cutting and welding methods prior to use to confirm they meet your individual fabrication specifications.

Care & Handling

Remove dust with a soft duster, cloth, sponge, vacuum cleaner, or compressed air. Do not scrub. Do not use solvents or any abrasive substance which might damage the coating of the fabric. For minor stains clean with a soft cloth, sponge, or soft brush dipped in lukewarm soapy water using mild detergent. Rinse with clean water. Leave the blind down until completely dry. For tougher stains and disinfecting instructions visit www.MermetUSA.com.

5970 N. Main Street • Cowpens, SC 29330

Sales Department: Ph (866) 902-9647

info@MermetUSA.com





Sun Control Textiles™

Product Specifications Sheet

E Screen™ 5%

Specifications

Product Category: Conventional
Openness Factor: 5%
UV Blockage: Approximately 95%
Fabric Style: Basketweave
Item #: 007505

Composition: 36% fiberglass / 64% vinyl
Standard Packaging: Rolls of 34 ly (31 lm)
Width: 78" (200 cm), 98" (250 cm), 122" (310 cm)
Weight: 10.7 oz / yd2 (363 g / m2) ± 5%
Thickness: 0.016" (0.41 mm) ± 5%

Fenestration Data

Color#	Color Name	Fabric Properties						Fabric & Glass			
		Rs IR (%)	Thermal			Optical		Commercial		Residential	
			Total Solar			Rv (%)	Tv (%)	SHGC % Improvement		SHGC	
Rs (%)	As (%)	Ts (%)	Interior	Exterior	Interior			Exterior			
030001	Charcoal/Grey	11	10	83	7	10	7	16	82	0.62	0.12
002002	White/White	68	71	9	20	76	17	55	76	0.30	0.17
002020	White/Linen	61	62	18	20	65	16	47	76	0.36	0.17
002007	White/Pearl	49	51	37	12	55	9	39	84	0.40	0.12
007020	Pearl/Linen	36	37	48	15	40	12	34	76	0.45	0.16
007007	Pearl/Pearl	29	31	57	12	33	10	29	79	0.48	0.15
007001	Pearl/Grey	27	27	61	12	27	10	26	79	0.50	0.15
00M122	Charcoal/Grey-Stone	11	12	79	9	12	9	18	76	0.56	0.15
030030	Charcoal/Charcoal	6	6	90	4	5	4	13	84	0.64	0.10
030061	Charcoal/Cocoa	6	6	87	7	6	7	13	82	0.64	0.12
030071	Charcoal/Apricot	15	15	78	7	16	6	18	84	0.59	0.11

Fabric properties may vary from the values reported due to standard variations in the manufacturing process. The fabric performance tests were conducted in accordance with ASTM E891 & ASTM E903-96: Total Solar Transmittance (Ts), Total Solar Reflectance (Rs), Solar Reflectance in Infrared (Rs IR), Total Solar Absorptance (As), Visible Reflectance (Rv), and Visible Transmission (Tv). Glass performance tests for Solar Heat Gain Coefficient (SHGC) were conducted using the Lawrence Berkeley National Laboratory Window 7.7 NFRC certified software. SHGC % improvement for commercial applications is based on a standard commercial glass makeup of Double Glazing 6 mm / 1/2" air / 6 mm with low E on surface #2. SHGC for residential applications is based on a default residential glass makeup of 3mm clear glass / 1/2" air / 3mm clear glass. Results for SHGC were obtained using the center of glass. Acoustical performance was tested in accordance with ASTM C423-17a: NRC is Noise Reduction Coefficient, SAA is Sound Absorption Average. For up-to-date test results, performance specifications and larger samples, contact Mermet at info@MermetUSA.com.

Fabrication Methods:

Cutting: Crush, cold, or ultrasonic
Welding: Fabric welds without tape. 225-275°F. 5-10s.
 Radio frequency, impulse, hot air, or wedge

Fire Classifications:

NFPA 701-19 TM#1, California U.S. Title 19
 CAN/ULC-S109-14 Small & Large Flame Test

Environmental Benefits:

RoHS - Lead Free
 GREENGUARD Gold

Bacterial and Fungal Resistance:

ASTM E2180, ASTM G21

Acoustical Performance:

NRC: 0.10, SAA: 0.09

We recommend testing all cutting and welding methods prior to use to confirm they meet your individual fabrication specifications.

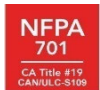
Care & Handling

Remove dust with a soft duster, cloth, sponge, vacuum cleaner, or compressed air. Do not scrub. Do not use solvents or any abrasive substance which might damage the coating of the fabric. For minor stains clean with a soft cloth, sponge, or soft brush dipped in lukewarm soapy water using mild detergent. Rinse with clean water. Leave the blind down until completely dry. For tougher stains and disinfecting instructions visit www.MermetUSA.com.

5970 N. Main Street • Cowpens, SC 29330

Sales Department: Ph (866) 902-9647

info@MermetUSA.com



E Screen™ 10%

Specifications

Product Category: Conventional
Openness Factor: 10%
UV Blockage: Approximately 90%
Fabric Style: Basketweave
Item #: 007510

Composition: 36% fiberglass / 64% vinyl
Standard Packaging: Rolls of 34 ly (31 lm)
Width: 78" (200 cm), 98" (250 cm), 122" (310 cm)
Weight: 10.3 oz / yd2 (350g / m2) ± 5%
Thickness: 0.020" (0.52 mm) ± 5%

Fenestration Data

Color#	Color Name	Fabric Properties						Fabric & Glass			
		Rs IR (%)	Thermal			Optical		Commercial		Residential	
			Total Solar			Rv (%)	Tv (%)	SHGC % Improvement		SHGC	
Rs (%)	As (%)	Ts (%)	Interior	Exterior	Interior			Exterior			
030001	Charcoal/Grey	9	8	80	12	8	11	11	82	0.65	0.14
002002	White/White	63	66	9	25	70	22	50	71	0.35	0.21
002020	White/Linen	57	58	17	25	62	22	42	71	0.39	0.21
002007	White/Pearl	48	50	30	20	54	18	37	74	0.43	0.18
007020	Pearl/Linen	34	35	46	19	37	17	32	76	0.48	0.19
007007	Pearl/Pearl	29	30	54	16	31	14	26	76	0.50	0.17
007001	Pearl/Grey	27	26	58	16	26	14	24	74	0.52	0.17
00M122	Charcoal/Grey-Stone	10	10	79	11	11	11	16	76	0.58	0.16
030030	Charcoal/Charcoal	3	3	85	12	4	12	8	79	0.67	0.14
030061	Charcoal/Cocoa	5	5	84	11	5	11	11	82	0.66	0.13
030071	Charcoal/Apricot	14	14	72	14	14	13	16	79	0.62	0.15

Fabric properties may vary from the values reported due to standard variations in the manufacturing process. The fabric performance tests were conducted in accordance with ASTM E891 & ASTM E903-96: Total Solar Transmittance (Ts), Total Solar Reflectance (Rs), Solar Reflectance in Infrared (Rs IR), Total Solar Absorptance (As), Visible Reflectance (Rv), and Visible Transmission (Tv). Glass performance tests for Solar Heat Gain Coefficient (SHGC) were conducted using the Lawrence Berkeley National Laboratory Window 7.7 NFRC certified software. SHGC % improvement for commercial applications is based on a standard commercial glass makeup of Double Glazing 6 mm / 1/2" air / 6 mm with low E on surface #2. SHGC for residential applications is based on a default residential glass makeup of 3mm clear glass / 1/2" air / 3mm clear glass. Results for SHGC were obtained using the center of glass. Acoustical performance was tested in accordance with ASTM C423-17a: NRC is Noise Reduction Coefficient, SAA is Sound Absorption Average. For up-to-date test results, performance specifications and larger samples, contact Mermet at info@MermetUSA.com.

Fabrication Methods:

Cutting: Crush, cold, or ultrasonic
Welding: Fabric welds without tape. 225-275°F. 5-10s.
 Radio frequency, impulse, hot air, or wedge

Fire Classifications:

NFPA 701-19 TM#1, California U.S. Title 19
 CAN/ULC-S109-14 Small & Large Flame Test

Bacterial and Fungal Resistance:

ASTM E2180, ASTM G21

Environmental Benefits:

RoHS - Lead Free
 GREENGUARD Gold
Acoustical Performance:
 NRC: 0.05, SAA: 0.06

We recommend testing all cutting and welding methods prior to use to confirm they meet your individual fabrication specifications.

Care & Handling

Remove dust with a soft duster, cloth, sponge, vacuum cleaner, or compressed air. Do not scrub. Do not use solvents or any abrasive substance which might damage the coating of the fabric. For minor stains clean with a soft cloth, sponge, or soft brush dipped in lukewarm soapy water using mild detergent. Rinse with clean water. Leave the blind down until completely dry. For tougher stains and disinfecting instructions visit www.MermetUSA.com.

5970 N. Main Street • Cowpens, SC 29330
 Sales Department: Ph (866) 902-9647
info@MermetUSA.com

